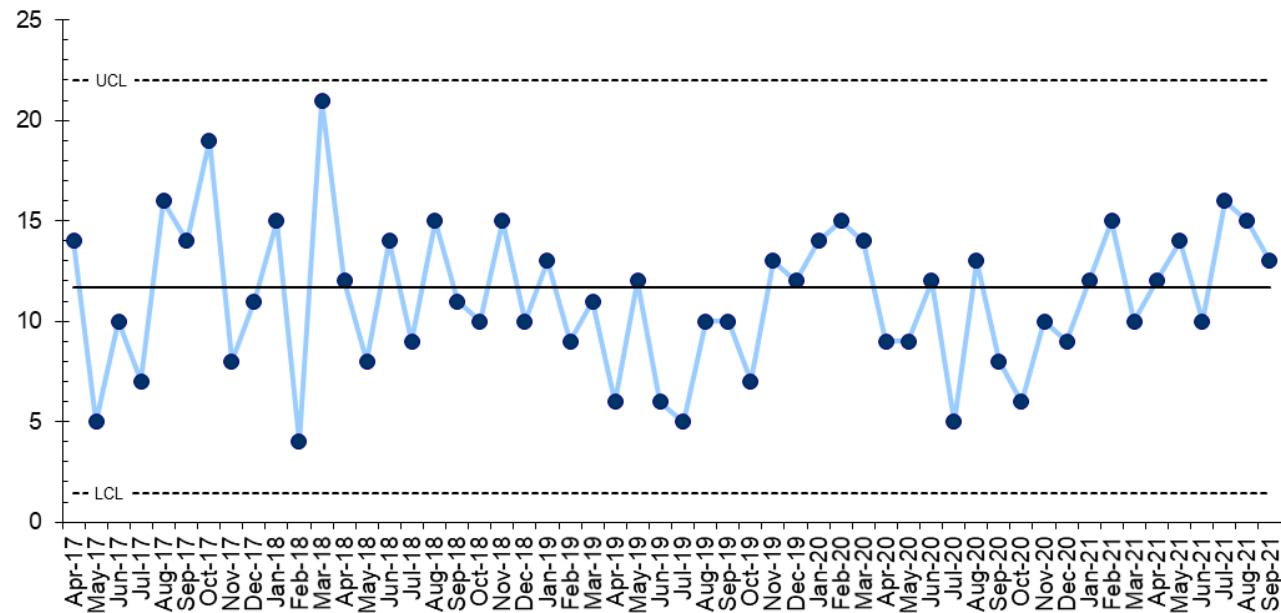


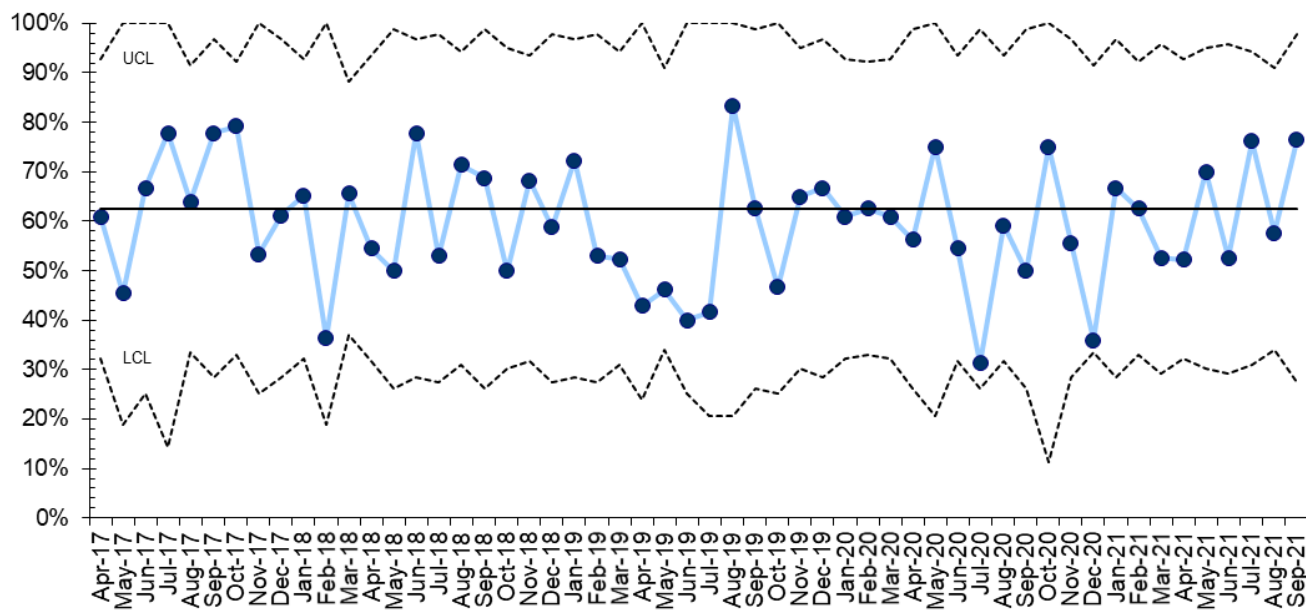
Count

C Chart of all SABS that are HAI

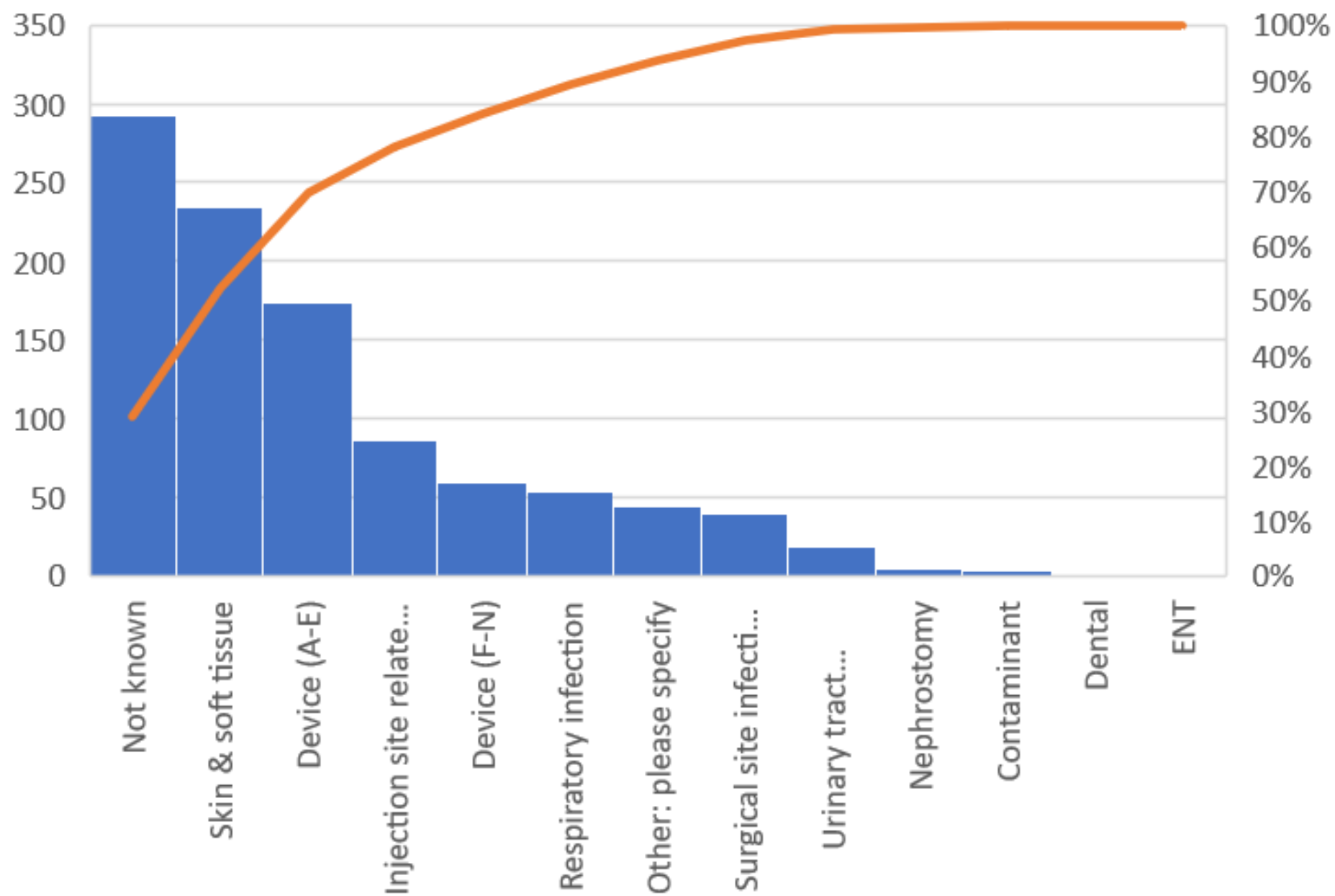


Percent

P Chart - Percent of SABS that are HAI



All SABS by site of entry

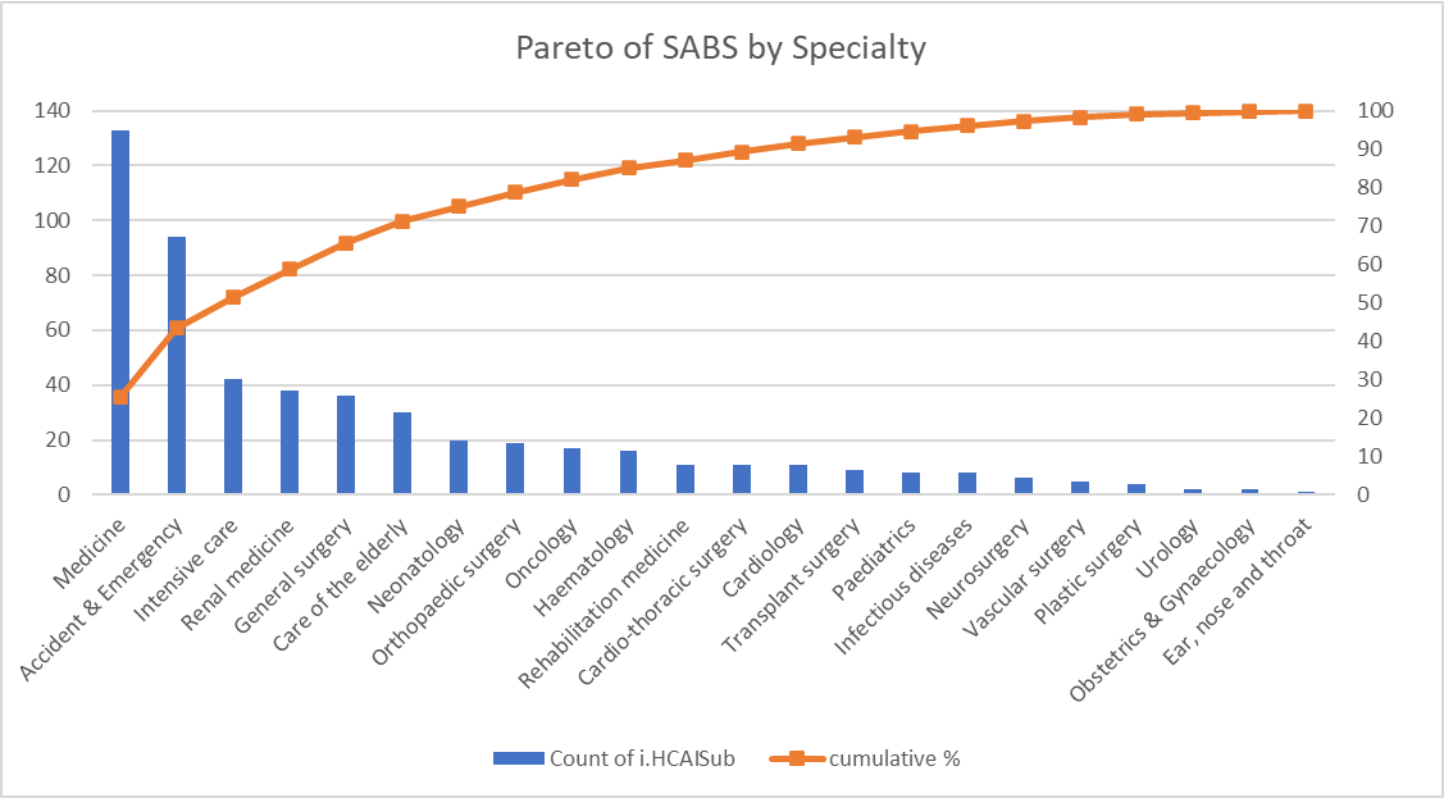


Site of Entry	# preventable	Total	% Preventable
Device (A-E)	160	174	92
Not known	1	134	1
Skin & soft tissue	18	117	15
Device (F-N)	38	58	66
Surgical site infection (all)	36	39	92
Other: please specify	10	32	31
Respiratory infection	1	29	3
Injection site related to illicit drug use	0	8	0
Nephrostomy	0	4	0
Grand Total (incl any 3 or less)	268	602	45

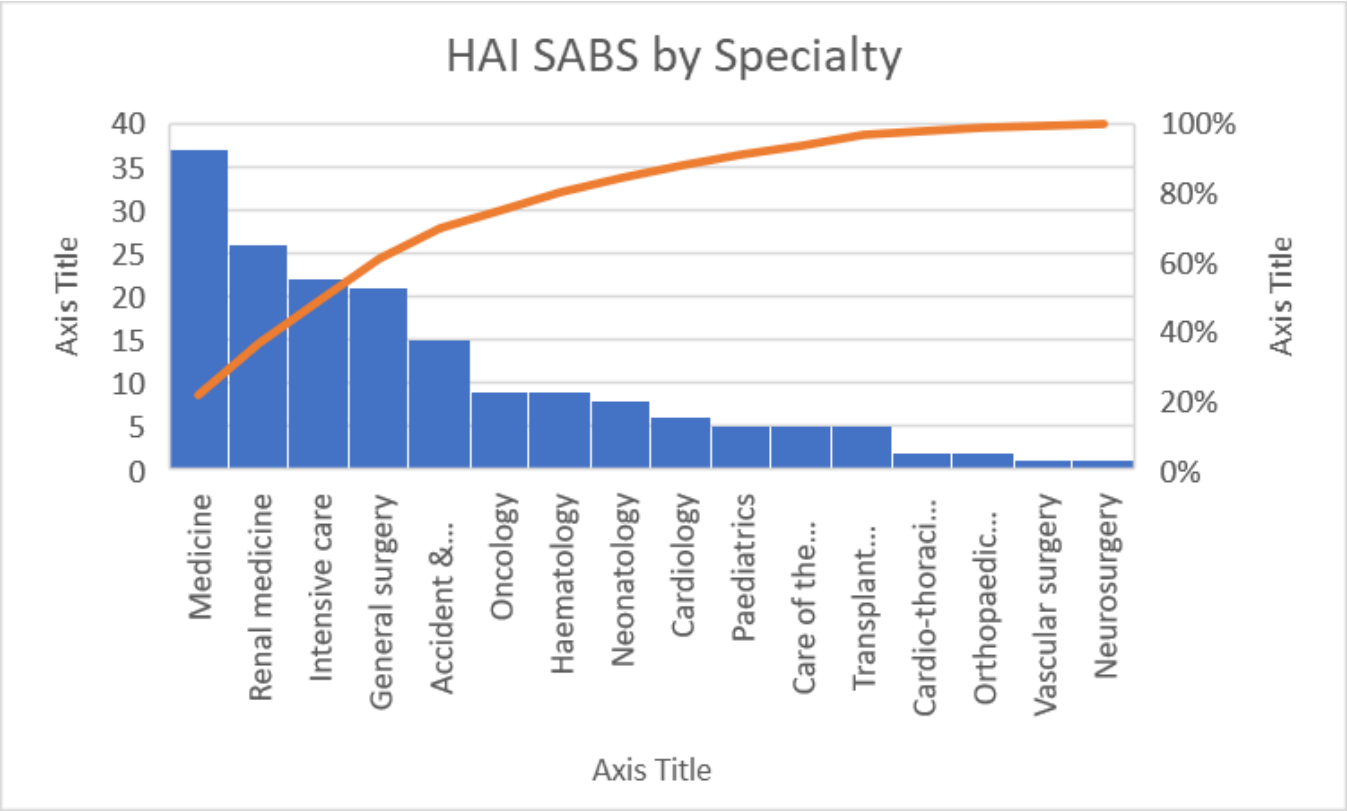
Site of Entry	# preventable	Total	% Preventable
Surgical site infection (all)	36	39	92
Device (A-E)	160	174	92
Device (F-N)	38	58	66
Other: please specify	10	32	31
Skin & soft tissue	18	117	15
Respiratory infection	1	29	3
Not known	1	134	1
Injection site related to illicit drug use	0	8	0
Nephrostomy	0	4	0
Grand Total (incl any 3 or less)	268	602	45

Healthcare Associated & Hospital Acquired Infection			Community	
Preventable	Total		Preventable	Total
268	602		5	406
% preventable	45		% preventable	1

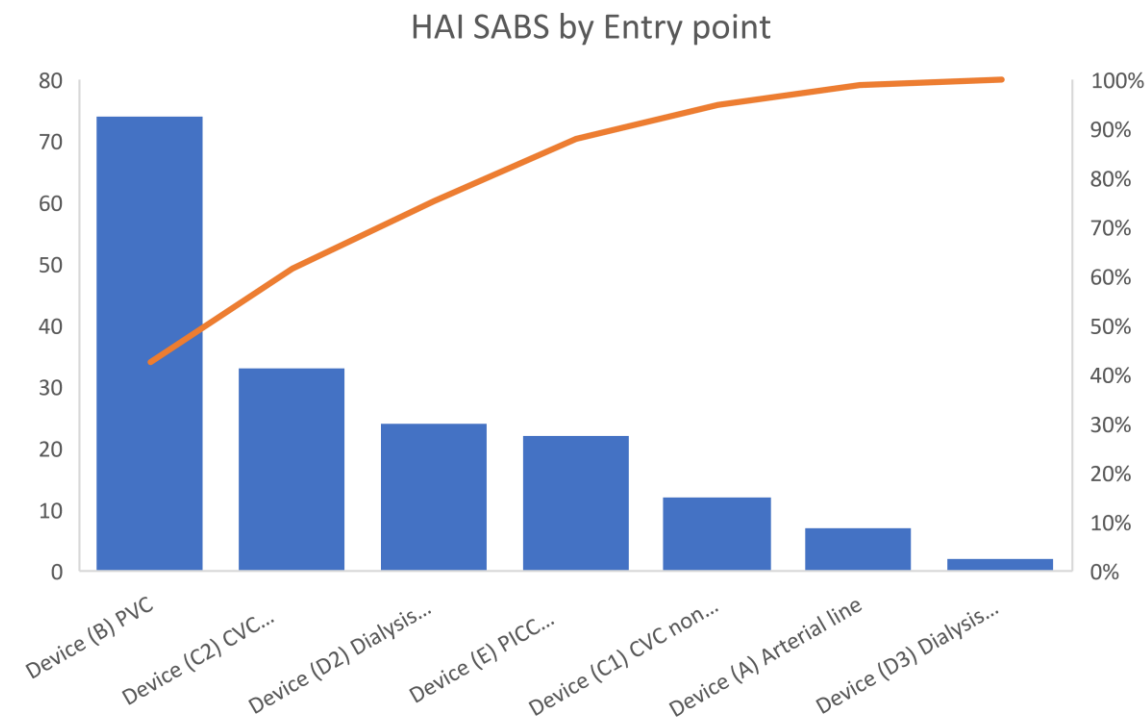
Site of Entry	# preventable	Total	% Preventable
Device (A-E)	160	174	92
Not known	1	134	1
Skin & soft tissue	18	117	15
Device (F-N)	38	58	66
Surgical site infection (all)	36	39	92



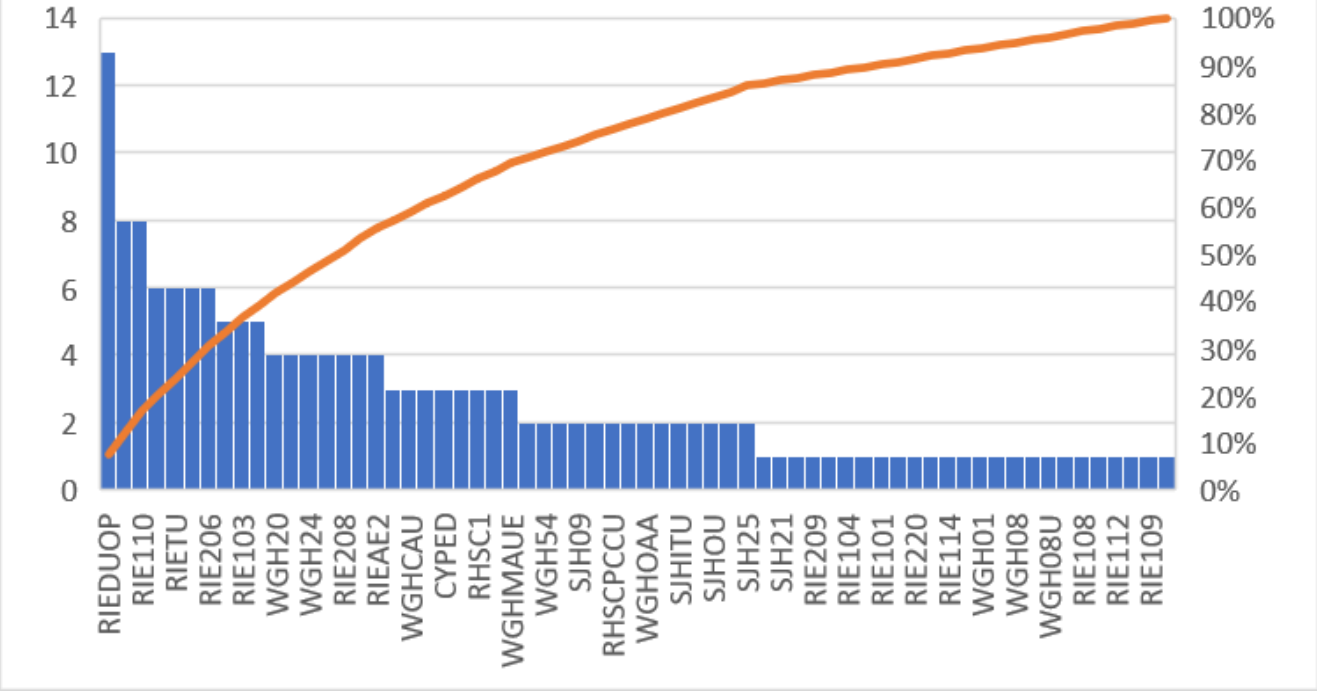
Device (A) Arterial line	7
Device (B) PVC	74
Device (C1) CVC non tunnelled	12
Device (C2) CVC tunnelled	33
Device (D2) Dialysis line - tunnelled	24
Device (D3) Dialysis line - fistula	2
Device (E) PICC/Midline	22
<b>Grand Total</b>	<b>174</b>



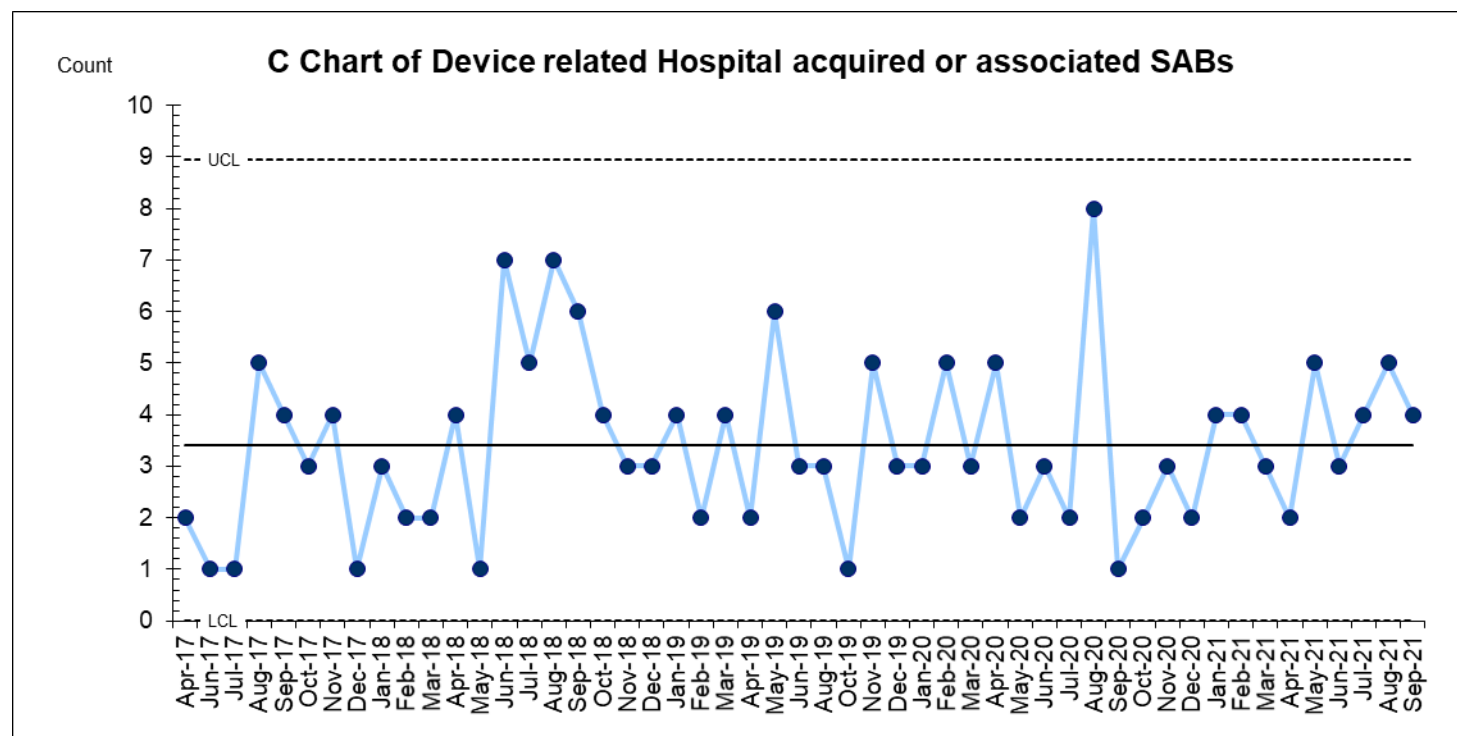
Device (A) Arterial line	7
Device (B) PVC	74
Device (C1) CVC non tunnelled	12
Device (C2) CVC tunnelled	33
Device (D2) Dialysis line - tunnelled	24
Device (D3) Dialysis line - fistula	2
Device (E) PICC/Midline	22
<b>Grand Total</b>	<b>174</b>



HAI SABS related to lines by ward







Row Labels	Count of i.HCAI
In too long	12
In too long  Left in when phlebitic	5
Inappropriate use	2
Inappropriate use  In too long	1
Inappropriate use  In too long  Left in when phlebitic	2
Left in when phlebitic	12
(blank)	126
Grand Total	160