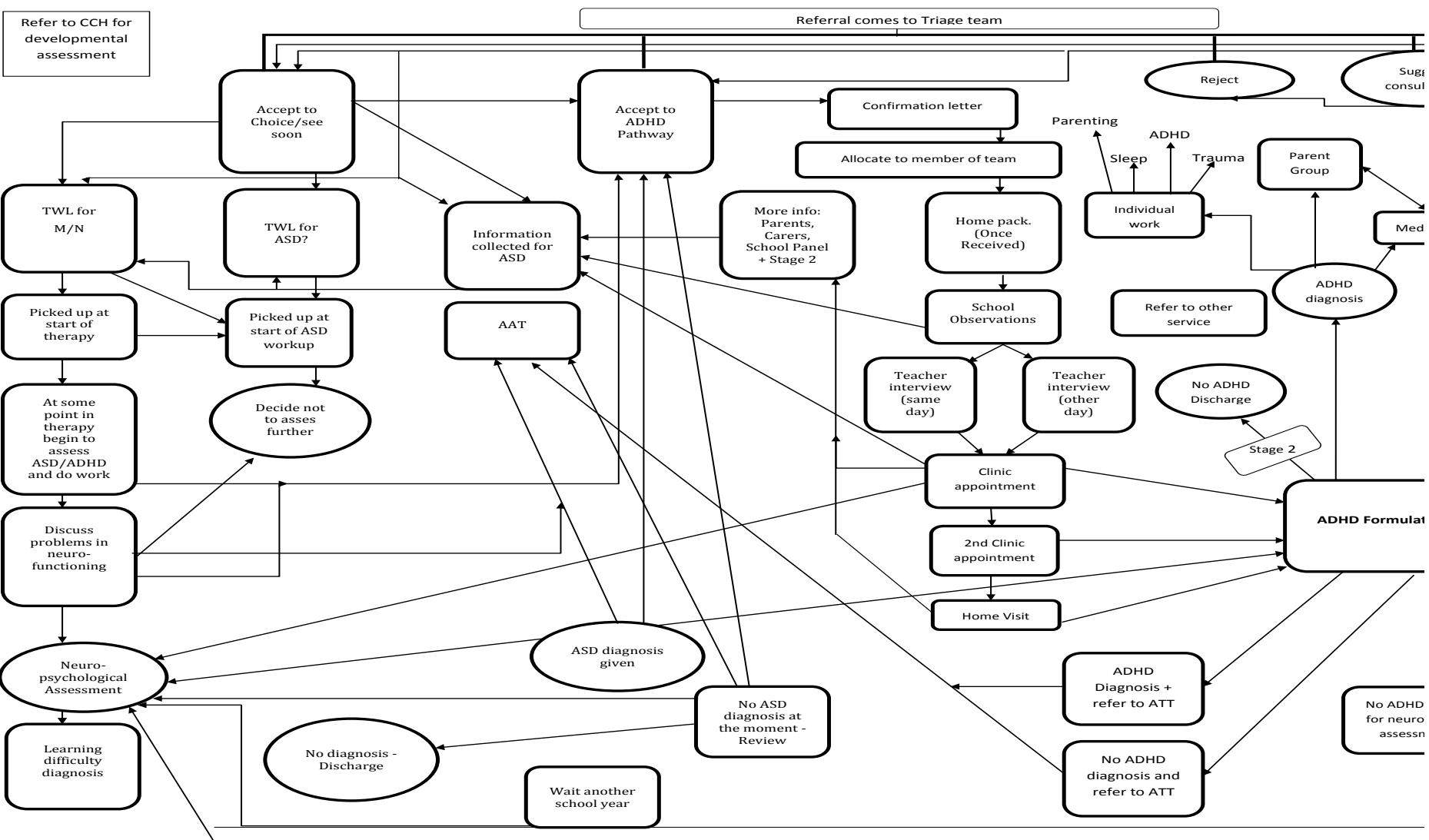


Improving Access to Neurodevelopmental Assessment in CAMHS East Lothian

Julie Burgmans, Martina Mungall,
Leanne Galloway and Beccy Brown

Why?



Why

Huge inconsistency in the time that families were waiting from referral to outcome.



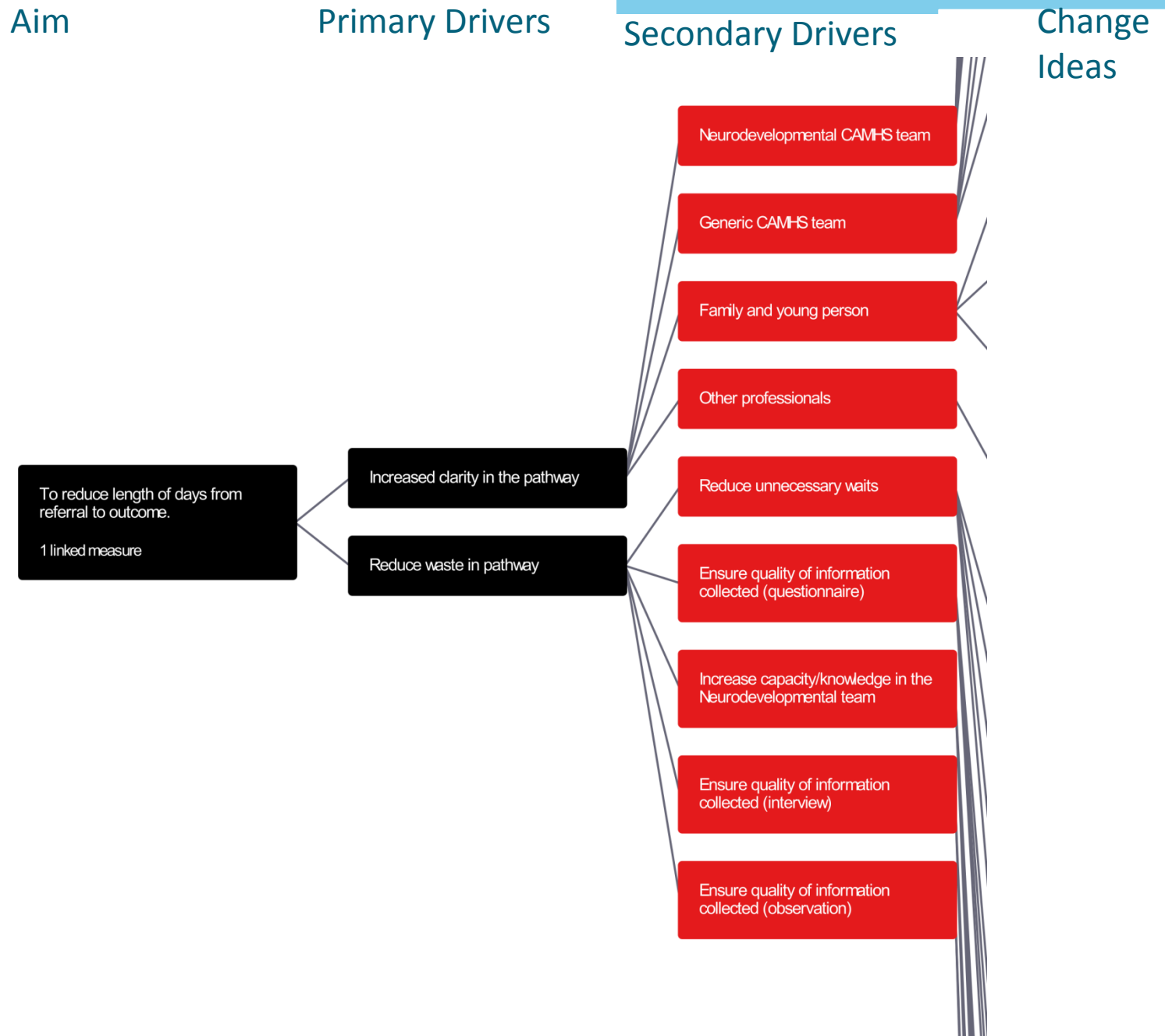
Aim

To reduce the number of days from referral to outcome.

Why was there inconsistency?

1. Reaching the point of Formulation and not being able to make a decision.
2. Reaching the point of Formulation and the young person then needing to be transferred to wait for another assessment.
3. Time taken to get case ready for Formulation.
4. (The significant waits for an Autism assessment at the AAT).

Driver Diagram



What changes have we made?

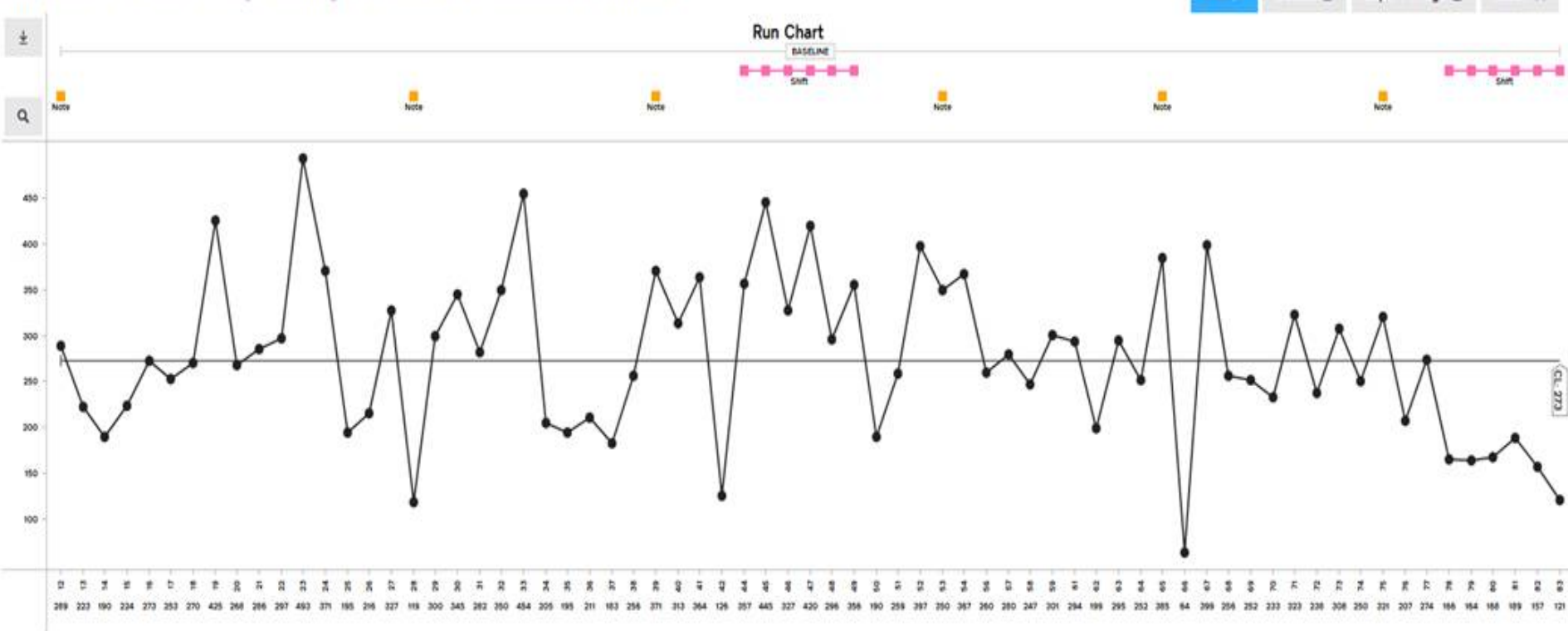


- Updated Homepack paperwork (to have a broader Neurodevelopmental focus)
- Amended information given in initial letter with Homepack
- Began obtaining InCAS scores from schools
- Implemented MDT Homepack Review Meetings
- Formalised 2 Clinic appointments
- Introduced built-in reflection after each clinic appointment
- Data recorded at each step of the pathway
- Updated the formulation paperwork
- Updated the school observation paperwork (to have a broader Neurodevelopmental focus)
- Moved to teacher interview rather than postal questionnaires
- LD assessment and ADHD assessment occur in tandem and are fed back at the same appointment

What was the outcome?

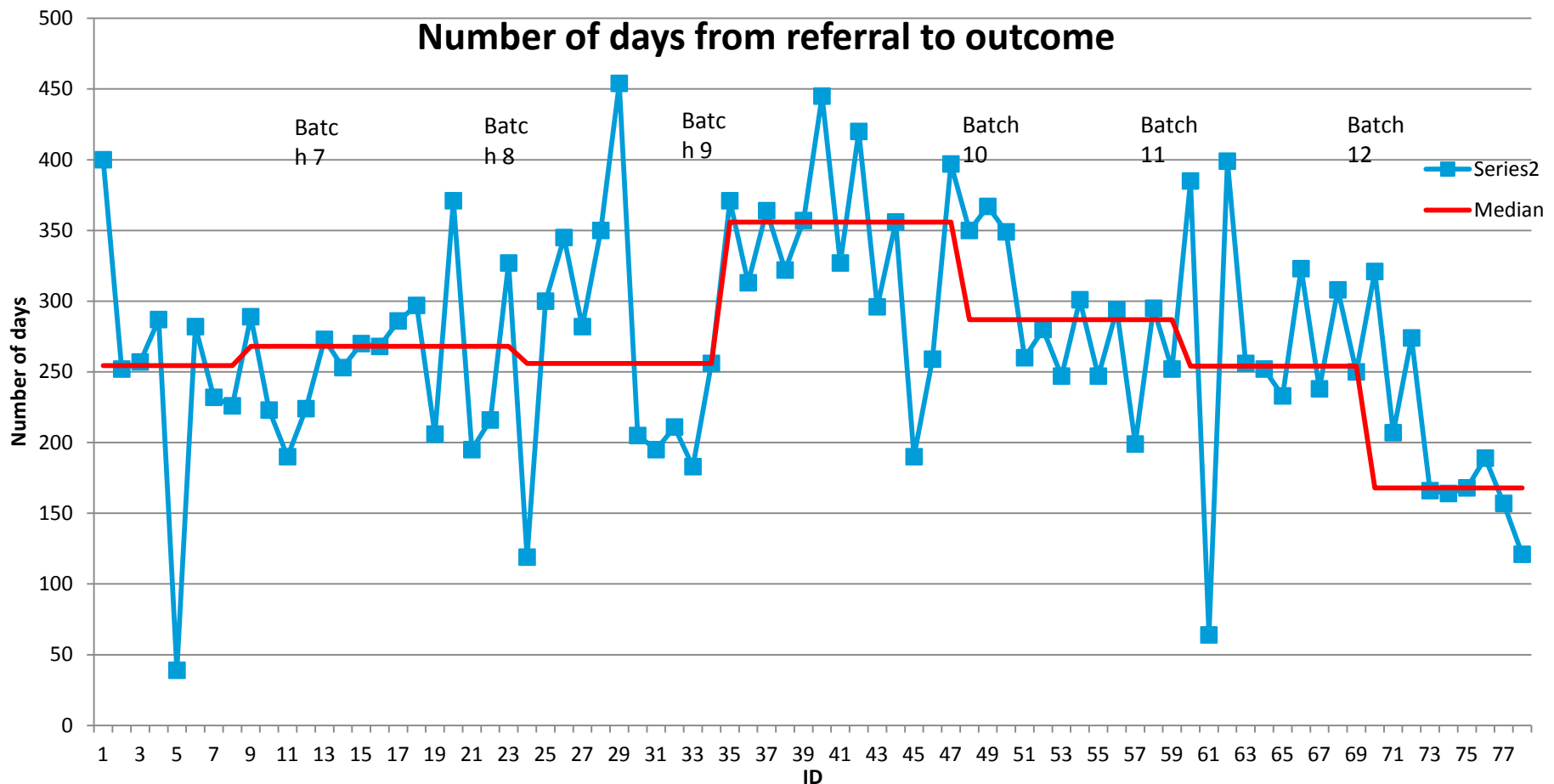
Reduction in the wait referral to outcome

Run Chart – Number of days waiting from referral to assessment outcome



What was the outcome?

Reduction in the range of waits within the same batch referral to outcome



What was the outcome?

Fewer re-formulations

Batch Number	Number of Re-formulations
7	1
8	2
9	2
10	2
11	0
12	0

What was the outcome?

Less time referral to outcome including Cognitive Assessment

Patient ID number/ Batch	Days referral to school obs	Days school obs to formulation 1	Days formulation 1 to formulation 2	Days formulation to feedback	Days referral to outcome	Batch average
45 (Batch 9)	96	133	197	19	445	356
73 (Batch 11)	117	121	-	28	308	254

What was the outcome?

Improved Clinician experience

“The formulations flow much better now.”

“The parent-only questionnaire is really good, easy to fill out and asks all the questions.”

“The file is easy to navigate and structured in a useful way.”

“I particularly like the school paperwork because it’s got everything that I need in one form. It’s clear on the front for all the things I need to think about.”

“The parent and child questionnaire is a bit repetitive but I guess that’s just the nature of parents and children.”

“It’s been really satisfying being able to take ownership of the East Lothian pathway and making changes at the ground level to improve the families’ experience of assessment.”

What was the outcome?

Experience of the family

“It was good to do the Homepack together with my husband so we were able to have a discussion and reach the same conclusion.”

“It was good that you had questions for my child so that they felt included too.”

“I felt that the questions were relevant. The appointment where you asked about when he was younger was a like a little bit of therapy for me. I felt heard.”

“The Homepack was very thorough, not just thinking about ADHD but other things like Autism as well....it was fine to fill in, it didn't take too long.”

“Whatever decision you make now [about a diagnosis] I'll be happy with because I know that you've taken the time to get all of the information.”

What was the outcome?

Experience of teachers

“I found the paperwork quite comprehensive. Originally I didn’t think that he had ADHD but going through the questions made me think and there were actually ADHD symptoms around.”

“I felt the questions were appropriate. They helped clarify my thoughts. It did feel challenging to complete all of the questions in the time I had available.”

Next steps

- Continue reviewing the whole process
- Formalise the extra questions we might ask about other presentations
- Give generic advice earlier on in the pathway
- Post-formulation group for those who don't get a diagnosis but do still need support
- Neurodevelopmental Pathway using the learning from this QI project