

Improve Physical Health Screening in Patients taking Antipsychotics

Ommar Ahmed, Advanced Clinical Pharmacist

Quality Issue / Initial Problem

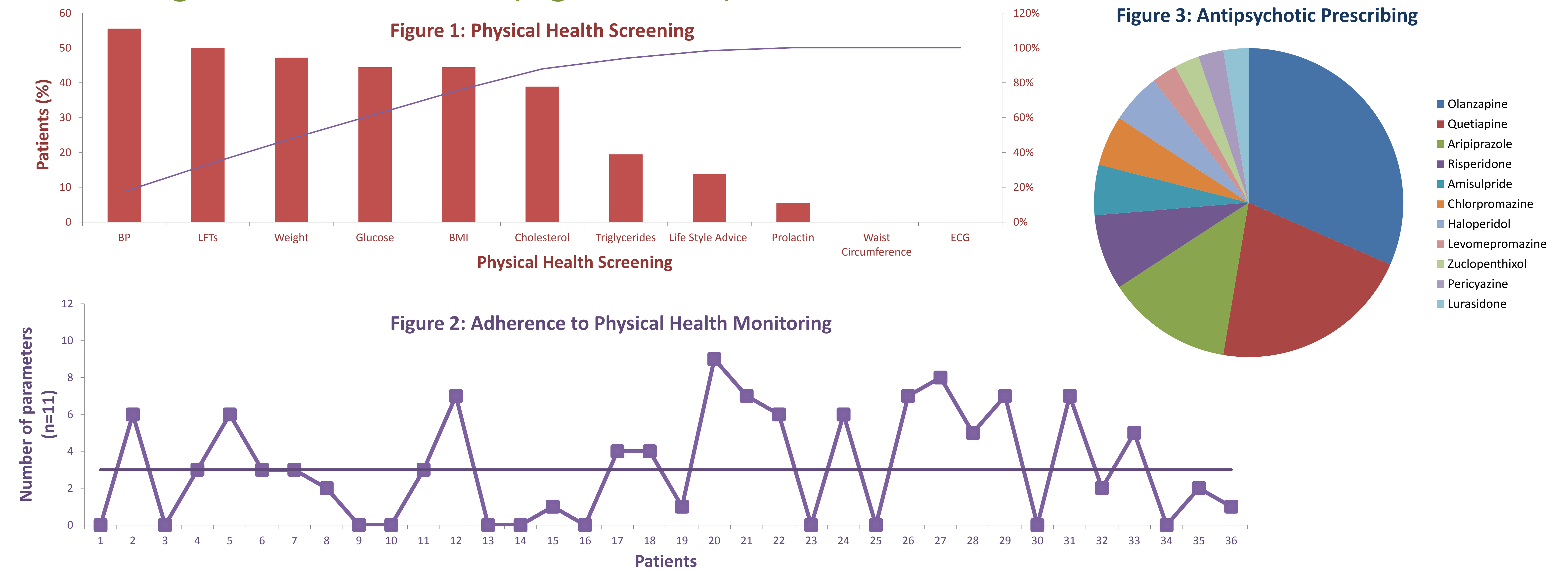
- Poor adherence to physical health monitoring in patients with Several Mental Illness (SMI) taking antipsychotic medication.
- People with SMI may have a shorter lifespan by 15 to 20 years compared with general population and excess mortality is believed to be mainly due to poor physical health.

Specific Aim

- ✓ Physical health parameters monitored as per national guidance in at least 50% of patients taking antipsychotics by December 2018.
- ✓ Initially for patients under the care of Cambridge Street CMHT, prescribed antipsychotic medication by two GP Practices.

Measurement of Improvement

- ❖ Collect data weekly/monthly and plot a run chart to establish if improvement in patient screening from baseline data (Figures 1 &2).



Tests of Change

- Improve screening tool
- Introduce a shared care agreement between primary and secondary care
- Pharmacist-led clinic

Tools

- Run chart
- Pareto chart
- Process map
- Driver diagram

Effects of Change

- Improve process reliability to ensure adherence to recommended physical health screening.
- Reduce disparity between physical and mental health.

Lessons Learned and Message for Others

- Lack of clear guidance on specific roles for different teams involved in patient care.
- Integrate screening tool into patient management systems across primary and secondary care.
- Patient-centred single system working.