

National Spinal Unit Patients Annual Renal Function Surveillance in Primary Care Radiology

Colin Anderson and the staff of Primary Care Radiology



Quality Issue

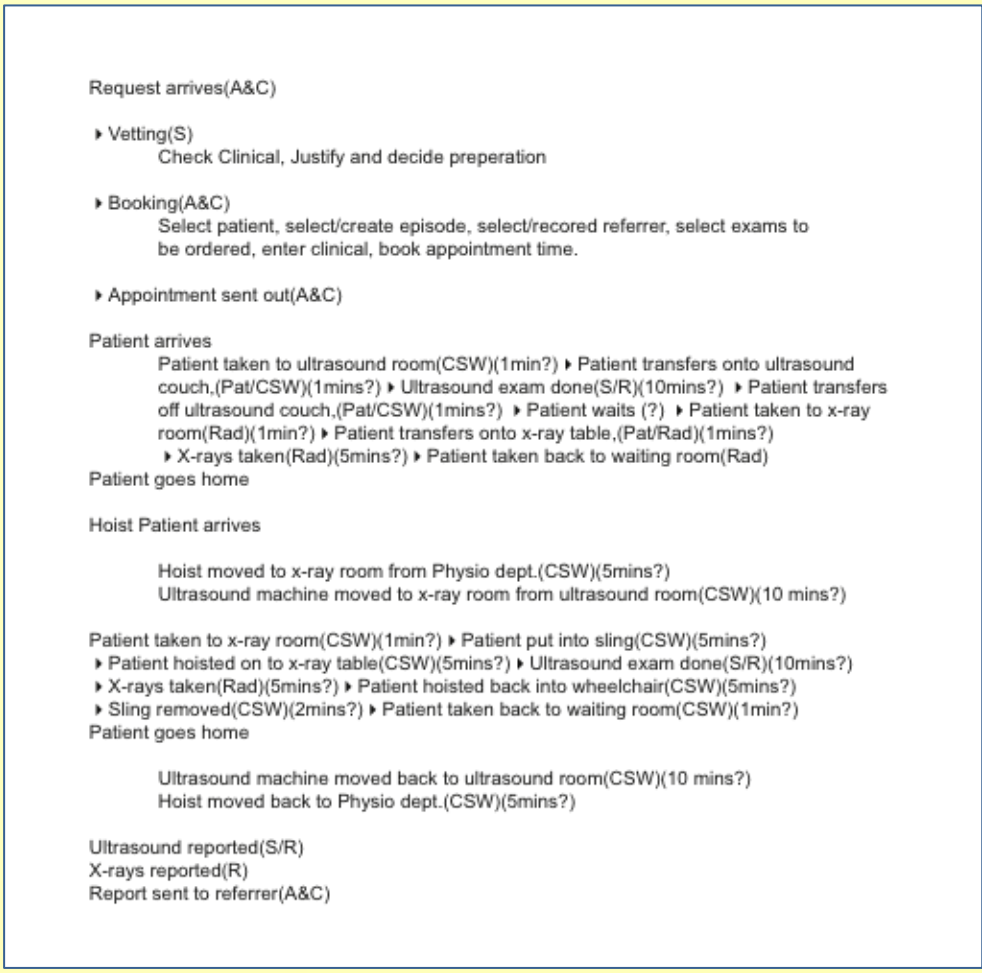
Primary Care Radiology (Leith CTC and East Lothian CH) provides renal function surveillance (Ultrasound and KUB x-ray) for National Spinal Unit patients. This group can require extra assistance and we have limited resources. We aim to provide a quality service while at the same time minimising disruption to other service users.

Specific Aim

All patients referred from the National Spinal Unit to Primary Care Radiology will be offered the correct tests and all those who attend will have the correct tests carried out and the results reported.

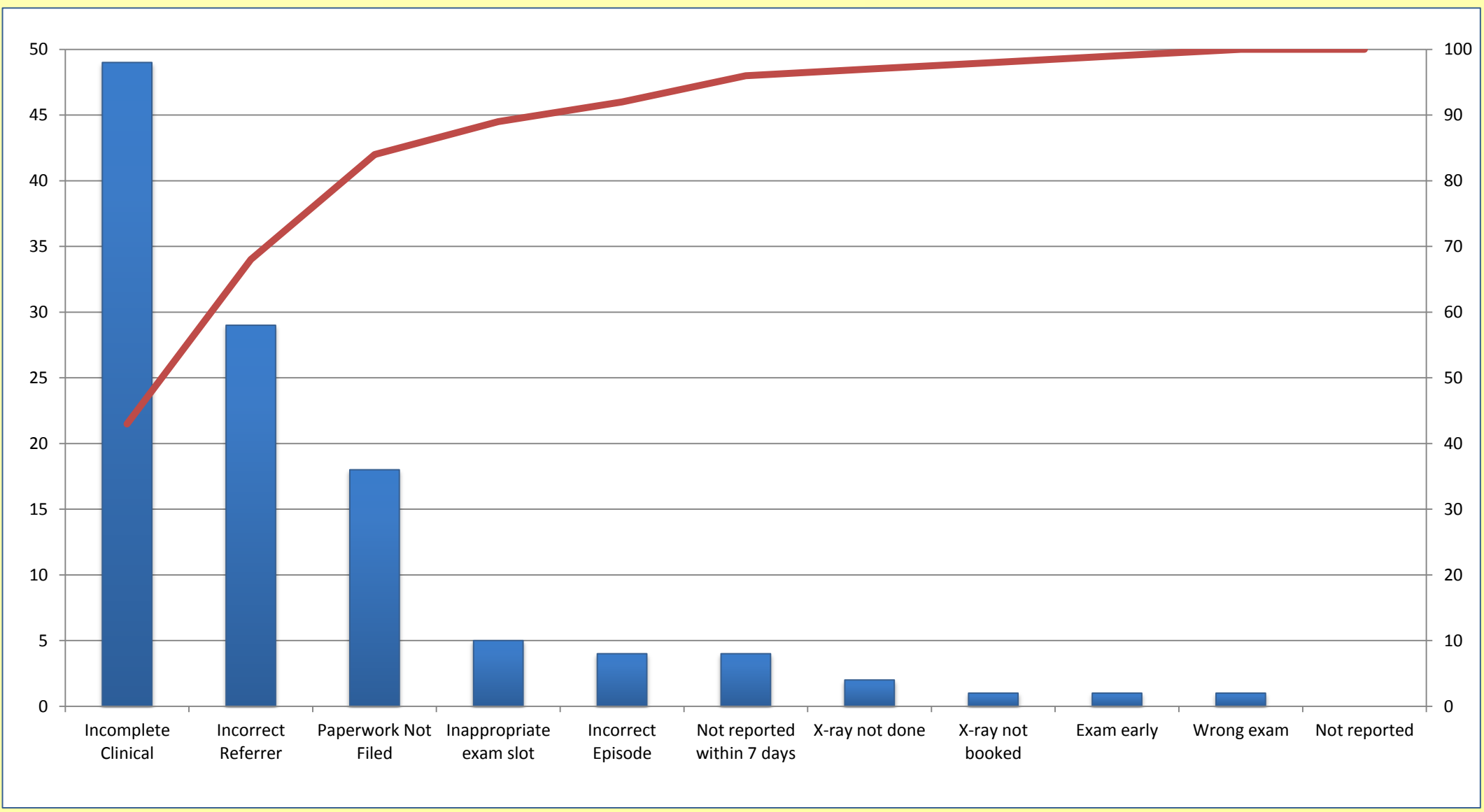
Tools

Process Mapping



Data Collection (50 Patients)

Pareto Chart



Change

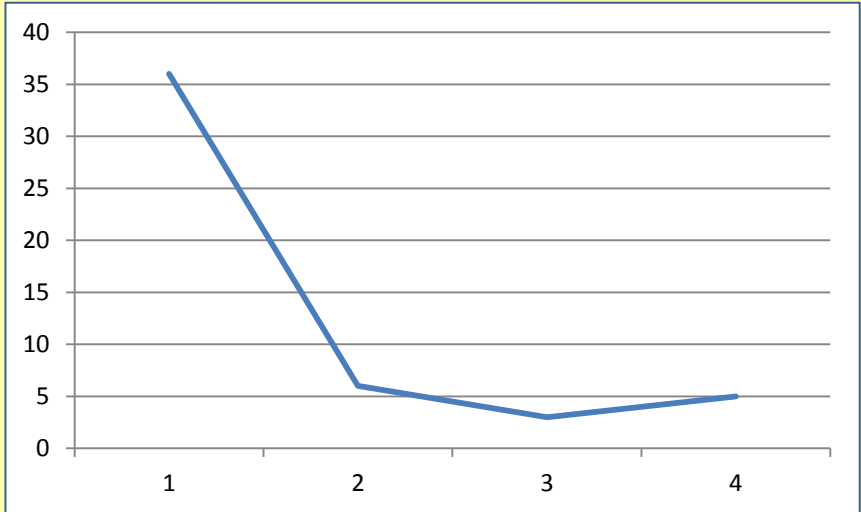
Upgrade Vetting Procedures (Balancing measure, extra time taken)

- Sonographers check previous reports
- A&C staff and sonographers check previous exam date

Measurement of Improvement

Effects of change

Run Chart



Hopefully no patients will attend unnecessarily

Lessons learned and message for others

- Need to work as a team
- Staff were motivated and had lots of good ideas and insights
- However not all staff were convinced of need to measure improvement
- The issue we focussed on had not been identified before looking at the data
- We have a number of other issues that need addressed and the challenge will be to keep the momentum going and make the improvements permanent